



Get Set With Eureka



{Company Profile}

Drawing its name from the Eureka Stockade, an historic site synonymous with the Ballarat region, Eureka Concrete opened with three staff in Latrobe Street Ballarat during 1972.

Now recognised as a leader in the highly competitive pre-mixed concrete industry, Eureka Concrete has remained loyal to the city it first called home sourcing materials and services locally wherever possible, whilst also offering an efficient service and a range of top quality products.

When the Ballarat Latrobe Street site was first developed it was the most modern in Australia for its size and began with two company owned trucks. The site included a 50 tonne cement silo and a weigh hopper with a capacity of more than seven cubic metres, enabling a complete load to be mixed at once. Due to the plant's modular design later extensions were easy to coordinate.

In 1987 the Eureka Concrete silo was replaced with a custom built plant, consisting of two seven cubic metre hoppers and a two 100 tonne silos incorporating air control equipment which not only met, but exceeded, Environment Protection Authority requirements.

The original equipment, all still in good working order, was upgraded and in 1988 was set up at Beaufort, offering the community quality concrete and excellent delivery times.

Eureka Concrete's third facility opened in Ballan during 1996 and demand quickly exceeded expectations in this rapidly developing market.

Most recently Eureka Concrete added a Maryborough concrete plant to their locations along with a sand quarry at Ampitheatre.

Eureka Concrete has continued to resource to meet demand increasing staff numbers, expanding both maxi and mini truck fleets to ensure premium service levels are maintained.

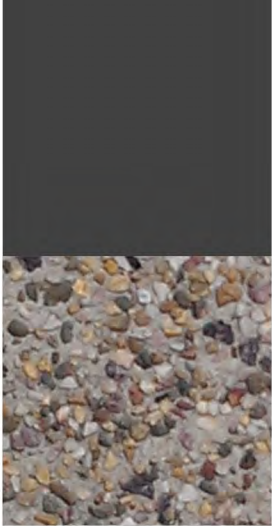
Additional enhancements including the upgrade of administration facilities and computerising all facets of operation leaves Eureka Concrete well equipped to meet the challenges of the future.



{Exposed-washed pebble}

Eureka Concrete Washed Pebble offers a natural texture and style and enables you to select from our range of designer aggregates to be set in your concrete. Depending on your personal preference, the degree of smoothness desired, and the function of the area, aggregate exposure can be either heavy or light.

Washed Pebble is hard-wearing, visually appealing and suits an array of applications including both traditional and modern landscapes and is also ideally suited to paths and driveways, outdoor entertaining areas and poolside.



Exposed Mix 13



Exposed Mix 1



Exposed Mix 2



Exposed Mix 3



Exposed Mix 4



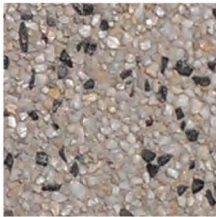
Exposed Mix 6



Exposed Mix 7



Exposed Mix 8



Exposed Mix 9



Exposed Mix 10



Exposed Mix 11



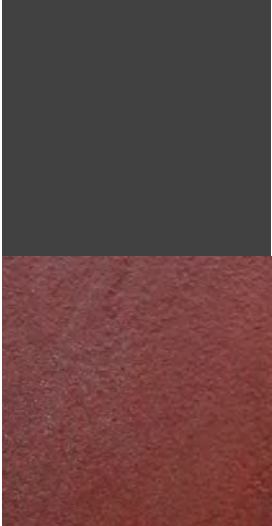
Exposed Mix 12

{Coloured Concrete}

Eureka Concrete Colour Concrete offers a rainbow of colour options to suit your design requirements. Hard-wearing and virtually limitless in options, Coloured Concrete is produced through blending colour pigment with your concrete prior to delivery. Eureka Concrete's process ensures consistent colour and eliminates the risk of colour loss through chipping or damage.

Select from our palette of colours for a vibrant result which will stand the test of time. Please visit our website for more information on Coloured Concrete.

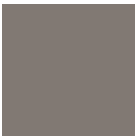
www.eurekaconcrete.com.au



Charcole



Opal



Yarra



Earth Brown



Copper



Magic Sunset



BlueStone



Jade Green



Desert Beige



Goanna



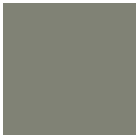
Butterscotch



Outback



Black



Gumleaf



Lemon Cream



Dusty Rose



Tequila Sunrise



Majestic Plum



Kosciusko



Daintree



Classic Suede



Platypus

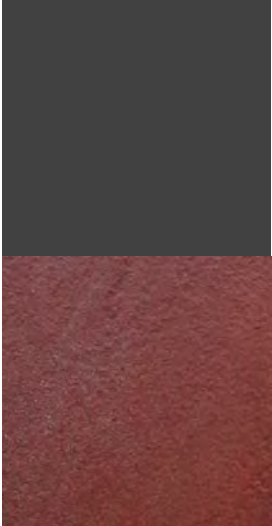


Latte



Red Cliffs

{Coloured Concrete}



Silver Ghost



Wheat



Melaleuca



Espresso



Brazil Nut



Hidden Valley



Lizard



Paperbark



Chardonnay



Billabong



Sun Kiss



Light Mahogany



Choc Malt



SandStone



Beach



MoleSkin



Cinnamon



Terracotta



Light Brown



Yellow



Brick



Dark Brown



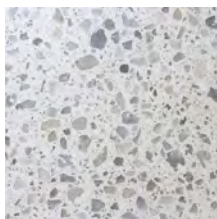
Chrome Green



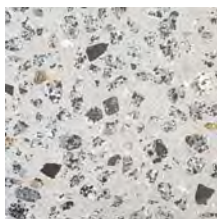
Dusty Red

{Polished-concrete}

Eureka Concrete Polished concrete is a new generation product that combines the practicality of concrete with the aesthetic appeal of a glossy finish.



Polished Mix 1



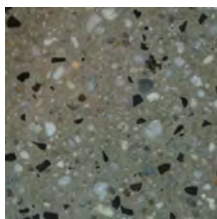
Polished Mix 2



Polished Mix 3



Polished Mix 4



Polished Mix 5

{Stencil Crete}

Stencilcrete is a decorative concrete system which produces the appeal of brick or block paving. The effect is achieved by applying colours and patterns to freshly laid wet concrete.

Colours and patterns can be mixed and matched in almost in unlimited combinations. Stencilcrete can enhance any setting in a way no other decorative surfacing system can.

Rosettes and borders can be used to emphasise particular features; logo and graphics can be incorporated into any design.

Stencilcrete is a striking decorative surface that is extremely hard-wearing and offers great economy.

Driveways, Pathways, Garden Settings, Pool Surrounds, Commercial, Traffic Features, Arcades, Carparks & Footpaths



Most Popular Colours



Charcoal



Sandstone



Terracotta



Hidden Valley

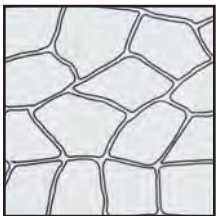
Most Popular Patterns



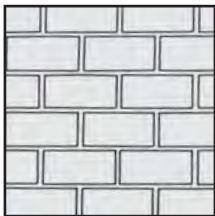
Random Bluestone



Tile 300



Bushrock



Running Bond

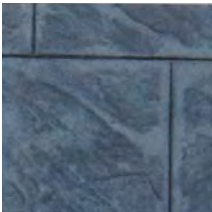
{Stampcrete}

Stampcrete allows you to create the realistic appeal of stone, slate or even wood. This decorative concrete system involves the application of colour, pattern and texture to the surface of concrete at the time of laying.

Two-toned colour combinations allow you to scheme colours to suit your environment and your preference. The natural tones and blends create the realistic appeal of natural materials. Natural textures, seams and faults are achieved using special stamp moulds to impress the surface of the wet concrete.

Stampcrete is an extremely popular decorative surface. It is low maintenance, extremely durable, quick to apply and highly cost effective. If colour hardeners are used to create the look you want, the stamped concrete can increase the abrasive and compressive strength up to twice that of normal concrete.

Impressions



Walkway Slate



Ashlar Slate

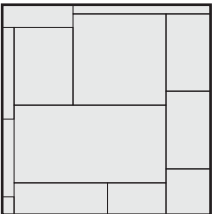


Timber Deck

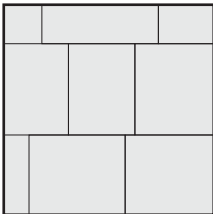


Brindabella

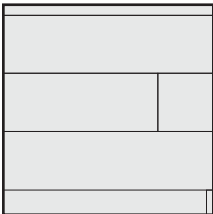
Patterns



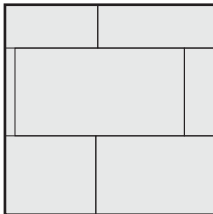
Regal



Walkway Tile



Timber Deck



Federation

Colours



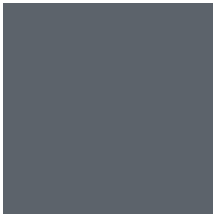
Silver Ghost



Desert Beige



Brick



BlueStone

{Other Products}



Tilt-up Panels



Tilt up panels have the flexibility of being poured on site or constructed off site and then transported and installed on site. Eureka Concrete can help with contacts in this application.

Civil Construction



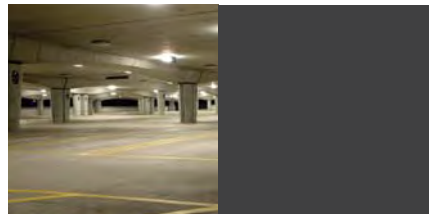
Eureka Concrete have experience in bridge decks, kerb and channel and other road and civil constructions.

House Slabs



Eureka Concrete sure know house slabs and can provide many sub-contractors to provide a quality slab on ground.

Industrial Floors



Eureka Concrete specialise in industrial and commercial concrete floors. We can provide many sub contractors for a quality finish.



www.eurekaconrete.com.au

Ballarat

1207 Latrobe Street
Ballarat Vic 3350
P (03) 5335 7277
F (03) 5336 1205

Beaufort

Racecourse Road
Beaufort 3373
P (03) 5349 2777
F (03) 5349 2675

Ballan

Gillespies Road
Ballan, 3342
P (03) 5368 1777
F (03) 5368 1049

Maryborough

17-19 Tullaroop Road
Maryborough 3465
P (03) 5461 2492
F (03) 5461 2622